

PWID + COVID-19 DATA COLLABORATIVE

Background, Overview & Next Steps

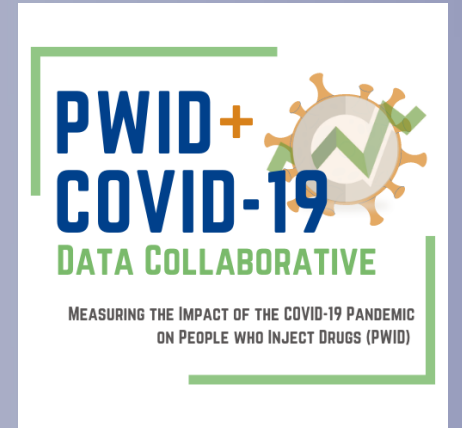
Monday, February 13, 2023

12:00 PM EST

This work was supported by the CDC National Center for HIV/AIDS, Viral Hepatitis, STD, and TB Prevention Epidemiologic and Economic Modeling Agreement (NEEMA) (5U38PS004650).



+



Today's Moderator & Speakers



Natasha Martin
UC San Diego
School of Medicine



Heather Bradley
Rollins School of Public
Health



Don Des Jarlais
NYU School of Global
Public Health



**Steffanie
Strathdee**
UC San Diego
School of Medicine



**Daniela
Abramovitz**
UC San Diego
School of Medicine

Funding acknowledgement: The Coalition for Applied Modeling for Prevention (CAMP) is funded by CDC/NCHHSTP, U38PS004650 "Modeling HIV, Viral Hepatitis, STI, and TB to Improve Public Health"

PWID + COVID-19 Data Collaborative leadership

| | | | |
|--------------------------|--|----------------------------|---|
| Heather Bradley | Rollins School of Public Health | Judith Feinberg | West Virginia University Health Sciences |
| Don Des Jarlais | NYU School of Global Public Health | Nathan Furukawa | CDC |
| Sean Allen | Johns Hopkins Bloomberg School of Public Health | Becky Genberg | Johns Hopkins Bloomberg School of Public Health |
| Alice Asher | CDC | Pamina Gorbach | UCLA Fielding School of Public Health |
| Chelsea Austin | Georgia State University School of Public Health | Holly Hagan | NYU School of Global Public Health |
| Tyler Bartholomew | University of Miami Miller School of Medicine | Emalie Huriaux | Washington State Department of Health |
| Amy Board | CDC | Hermione Hurley | Denver Health |
| Annick Borquez | UC San Diego School of Medicine | Nicole Luisi | Rollins School of Public Health |
| Kate Buchacz | CDC | Natasha Martin | UC San Diego School of Medicine |
| Anastasia Carter | Rollins School of Public Health | Steffanie Strathdee | UC San Diego School of Medicine |
| Hannah Cooper | Rollins School of Public Health | | |

COVID-19 and scientific collaboration

The New York Times

COVID-19 Change How the World Does Science, Together

Never before, scientists say, have so many of the world's researchers focused so urgently on a single topic. Nearly all other research has ground to a halt.

SCIENCE | BUSINESS[®]

COVID-19 Triggered Unprecedented Collaboration in Research

The pandemic has both spurred on and demonstrated the value of open science, but has also exposed gaps in science policy. Now is a good time for reform, says OECD

COLUMBIA NEWS

LESSONS LEARNED

How the Pandemic Ignited a New Wave of Scientific Collaboration

Potential Adverse Impacts of COVID-19 Pandemic on PWID Health

- COVID-19 infection and outcomes
- Social determinants of health: poverty, unemployment, homelessness
- New or worsening mental health conditions
- Disruptions to social and substance using networks
- Drug supply/supplier disruptions

Less access to:

- Harm reduction services
- Prevention and treatment services for infectious diseases
- Substance use treatment services (e.g., MAT)
- Overdose prevention services

Potential Positive Impacts of COVID-19 Pandemic on PWID Health

Service delivery level:

- Shifts to mobile delivery modalities for harm reduction services
- Shifts away from 1:1 syringe distribution
- Recognition of SSP staff as essential workers in some places
- Reductions in barriers to treatment: fewer in-person requirements, availability of telehealth services

Individual level:

- Increased health awareness, vaccination
- Reductions in substance use
- Increased resilience

Background

CDC and CAMP collaborator interest in understanding impact of COVID-19 on HIV and HCV transmission among people who inject drugs (PWID)

Data for parameterizing a model to answer this question are currently sparse but (some) are currently being collected

- On-going research studies that added COVID-specific data elements
- Surveillance
- Service delivery data

Opportunity to expand beyond purely modeling interests and build data consortium focused on PWID+COVID-19 issues for a variety of purposes

- Increase timeliness of data availability for the field collectively
- Increase collaboration and data sharing in a relatively small field
- Uses for modeling, evaluation of new program delivery modalities, understanding behavioral shifts

Overview



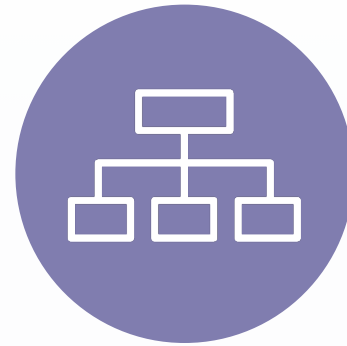
Phase I

Stakeholder
Process



Phase 2

Data
Collaboration



Phase 3

Meta-analysis and
Dissemination

Phase 1: Stakeholder Process

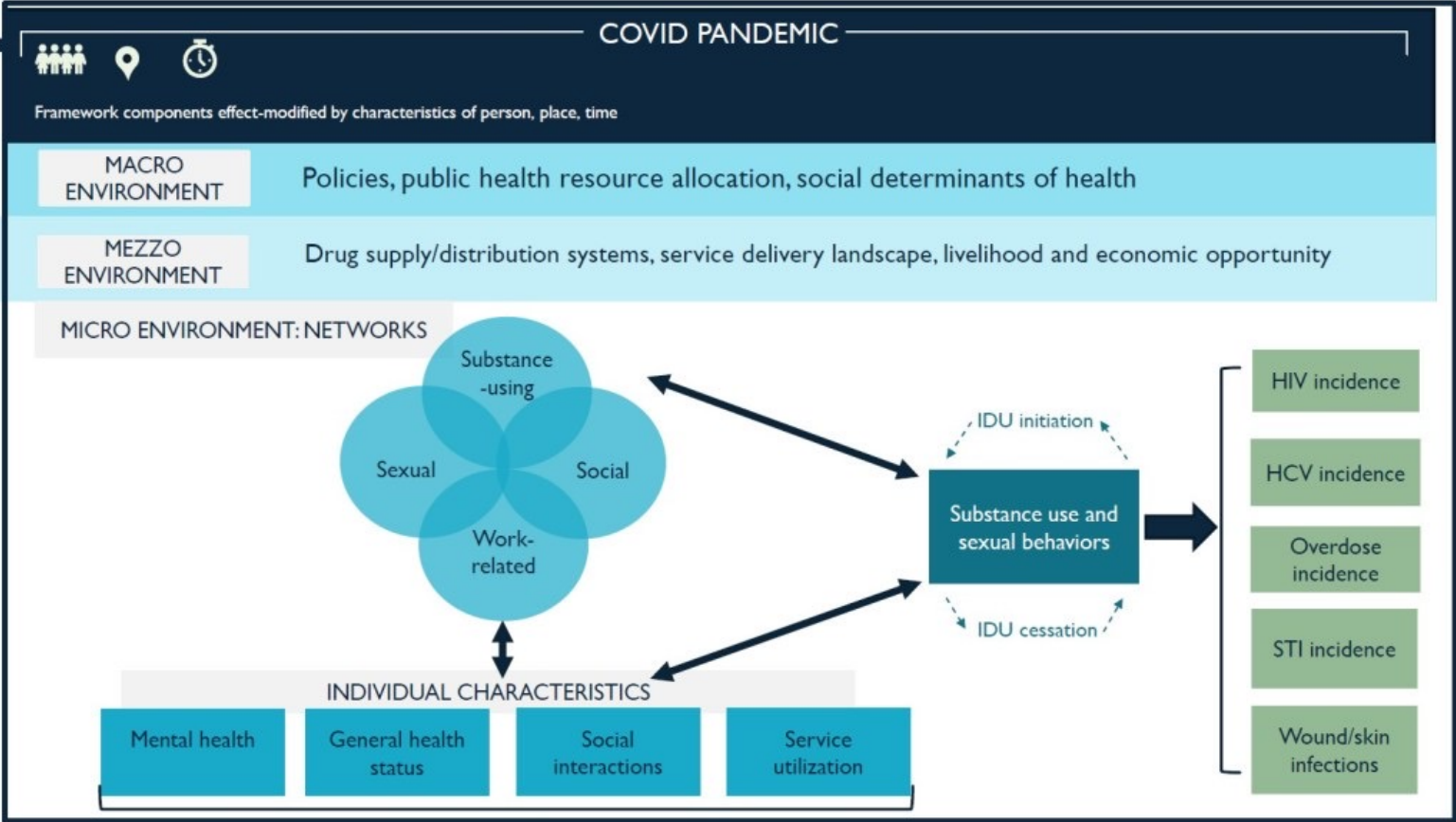


We invited 105 stakeholders to participate in a series of meetings to determine COVID-19 related changes in PWID

50+ academic, service delivery, and public health department stakeholders identified indicators of change in HIV, HCV, and overdose risk pre- and-post COVID-19 pandemic

Steering committee of top experts in the field of PWID health was convened to summarize findings from meetings in a “measurement framework” manuscript

Phase 1: Stakeholder Process



A stakeholder-driven framework for measuring potential change in the health risks of people who inject drugs (PWID) during the COVID-19 pandemic



Phase 2: Data Collaboration



- PWID + COVID-19 Data Collaborative launched in 2022 by steering committee
- Developed a set of indicators for measurement of potential effects on health at multiple levels
- Public website developed to support collaboration efforts, including interface for data submission and instructional materials
- Requesting submissions of summary measures from **research studies, surveys**, or routinely collected **service data** from 2019 to present
 - 12-month estimates
 - Stratified by gender, age group, race/ethnicity where possible
- **NOT** requesting line-listed patient, client, or participant data, only summary estimates of indicators measured (*e.g. % of PWID accessing harm reduction services in the 30 days preceding an interview conducted during this timeframe*)

Phase 2: Data Collaboration

Submitting Data: Overview



Instructional Guide

- Web-based
- Table of contents
 - Click to navigate to any section
 - Button on lower right of each page to return to ToC
 - Buttons throughout submission survey to open the guide
- Information about the project and data submission process
- Worksheets to assist with data preparation before submission

| Contents | |
|---|----|
| PWID + COVID-19 Data Collaborative | 3 |
| About the Project | 3 |
| About the Survey | 4 |
| Survey Preparation Checklist | 4 |
| Survey Tips | 4 |
| Respondent Information Worksheet | 5 |
| PWID Indicators for Researchers | 6 |
| Which research studies qualify for this analysis? | 6 |
| Study Information Worksheet | 6 |
| PWID Definition | 8 |
| Time Points | 8 |
| Stratifications | 9 |
| PWID Worksheet | 11 |
| Indicators | 12 |
| Indicator Worksheets | 14 |
| Percentage of PWID experiencing homelessness | 14 |
| Percentage of PWID who were incarcerated | 16 |
| Percentage of PWID tested for HIV | 18 |
| Percentage of PWID living with diagnosed HIV | 20 |

Phase 2: Data Collaboration

Submitting Data: Overview



Submission Survey

- Web-based
- Data entry tool for use after data have been prepared using a worksheet
- Dynamic content based on study information and indicator selection
- Save and continue feature
- Summary document

Save and continue later ▾

PWID+ COVID-19 DATA COLLABORATIVE
MEASURING THE IMPACT OF THE COVID-19 PANDEMIC ON PEOPLE WHO INJECT DRUGS (PWID)

Are you submitting data on behalf of a...

Research Study

Service Organization

Back **Next**

3%

Phase 2: Data Collaboration

Current Contributors



Research Studies

La Frontera Study

UC San Diego

PI: Dr. Steffanie Strathdee

At-Risk Youth Study

Simon Fraser University/BC Centre on Substance Use

PI: Dr. Kora DeBeck

MASH Cohort and Miami COVID-19 cohort

Florida International University

PI: Dr. Marianna Baum

Accessible Care Project

CUNY-School of Public Health

PI(s): Dr. Pedro Mateu-Gelabert, Dr. Kristen Marks

Vancouver Injection Drug Users Study

Simon Fraser University/BC Centre on Substance Use

PI: Dr. Kanna Hayashi

Heart Study

University of Maryland, Baltimore

PI: Dr. Shenghan Lai

Organizations

Tennessee Harm Reduction

Daniel Patrick Garrett



Phase 2: Data Collaboration

Importance of Collaboration



Multisector collaborations

are needed to rapidly measure, identify, and intervene on pandemic-related PWID health risks

Steering committee collaboration efforts toward this goal

- Measurement framework paper
- Prioritization of PWID health indicators
- Creating and promotion of PWID + COVID-19 Data Collaborative

Pandemic-related efforts promote longer term

- Relationships and new collaborations across stakeholders in PWID health
- Timely data sharing
- Researcher and practitioner-initiated agenda setting for improving PWID health

Phase 2: Data Collaboration

Data Contribution Experience: Research study



- Data submission process is straight forward
- Data preparation = seamless experience
 - Instructional Guide is a helpful & necessary resource
 - Including details of research study and survey questions is important
- Who is preparing/submitting data?
- Have numerical values handy!
- Transferring the data
- Complete worksheets in Instructional Guide first, then submit data

Phase 3: Meta-analysis and Dissemination



- Contributions will be meta-analyzed, by demographic stratifications where possible, and shared back with data contributors, as well as published in a peer-reviewed manuscript(s) for public use
 - The meta-analysis will be conducted by Terri Pigott, PhD. Dr Pigott specializes in methods for meta-analysis
- Estimates can be used for:
 - Modeling changes in infectious disease transmission and overdose
 - Evaluating change over time in service delivery modalities
 - Advocating for retention of beneficial policies and more resources to support PWID health

Collaborate with Us!

Benefits of being a Data Contributor

Publishing credit (contributors will be re-contacted proposing the use of any submitted data for public dissemination).

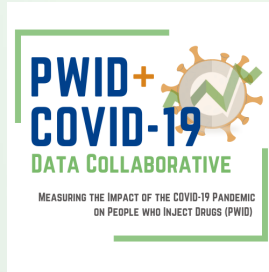
The PWID + COVID-19 Data Collaborative will provide Letters of Support for data contributors submitting grant proposals.

Visit us:

pwidcovid.org

or contact us at

pwidcovid@emory.edu



Thank You!

Questions or comments,
please contact:

Heather Bradley hbradl2@emory.edu

Anastasia Carter amcart5@emory.edu



CAMPModeling.org



[#CAMPResearch](https://twitter.com/CAMPModeling)



[@CAMPModeling](https://twitter.com/CAMPModeling)